

CORONA 101/102

MULTI-JET METER | WET RUNNER

DIEHL
Metering



APPLICATION

Domestic water meter

FEATURES

- ▶ Extremely low pressure loss and considerably extended measuring range
- ▶ Records very small amounts of water consumption
- ▶ Maximum long-term accuracy and absolutely corrosion-resistant
- ▶ Measuring data better than specified by calibration regulations
- ▶ Strainer insert in inlet connection for cleaning without damaging the seal
- ▶ Capable of withstanding any load for a short time
- ▶ Forward and return metering
- ▶ Fine adjustment by regulating plug

CORONA 101/102 Meter for horizontal pipes 101

MULTI-JET METER | WET RUNNER

GENERAL

Meter for horizontal pipes 101		
Medium temperature range	°C	0 ... 30
Temperature safety	°C	0 ... 50
Ambient operating temperature	°C	0 ... 55
Ambient storage temperature	°C	0 ... 55
Nominal pressure	PN bar	16
Display range		0.05 l ... 999,999 m ³
Protection class		IP 68

TECHNICAL DATA

Nominal diameter	DN	mm	20	20	25	40	50
Permanent flow rate	Q ₃	m ³ /h	2.5	4	10	16	-
Nominal flow rate	Q _n	m ³ /h	-	-	-	-	15
Overload flow rate	Q ₄	m ³ /h	3.125	5	12	20	-
Transitional flow rate	Q ₂	l/h	40	40	90	150	-
Minimum flow rate	Q ₁	l/h	25	25	40	80	-
Starting flow rate (MID)		l/h	4-6	4-6	6-8	20-25	-
Pressure loss at Q ₃		bar	0.6	0.6	0.6	0.6	-
Maximum flow rate (short-term)	Q _{max}	m ³ /h	-	-	-	-	30
Transition flow rate	Q _t	l/h	-	-	-	-	300
Minimum flow rate	Q _{min}	l/h	-	-	-	-	80
Starting flow rate		l/h	-	-	-	-	25-30

* Version flange

APPROVAL

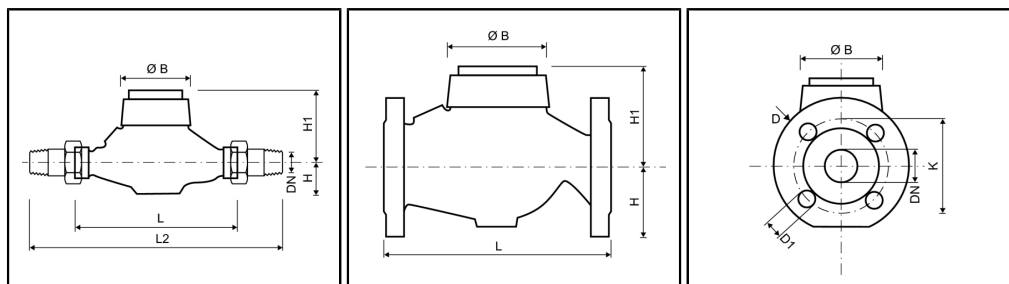
Nominal diameter	DN	mm	20	20	25	40	50
Permanent flow rate	Q ₃	m ³ /h	2.5	4	10	16	-
Nominal flow rate	Q _n	m ³ /h	-	-	-	-	15
MID			TH 8628	TH 8628	TH 8628	TH 8628	-
Dynamic range horizontal installation (Q ₃ /Q ₁)	R		80 / 100	40 / 80 / 160	50 / 80 / 100	50 / 80 / 100	-
EC			-	-	-	-	D 02 / 6.131.19
Metrological class			-	-	-	-	A•H / B•H

* Version flange

CORONA 101/102 Meter for horizontal pipes 101

MULTI-JET METER | WET RUNNER

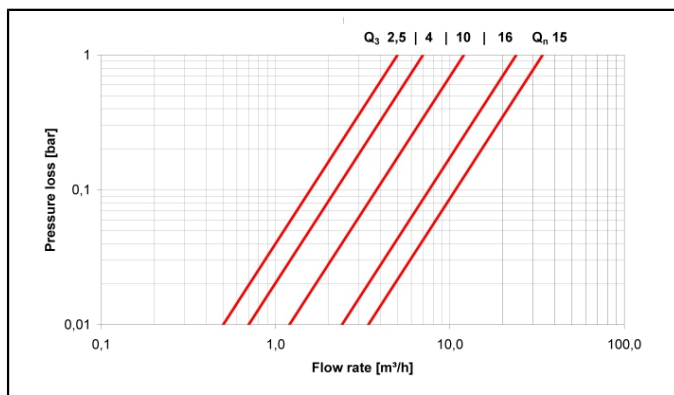
DIMENSIONS



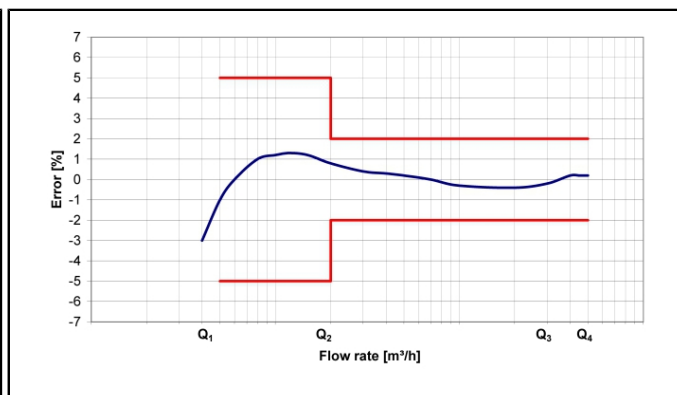
Nominal diameter	DN	mm	20	20	25	40	50
Permanent flow rate	Q ₃	m ³ /h	2.5	4	10	16	-
Nominal flow rate	Q _n	m ³ /h	-	-	-	-	15
Overall length (DIN ISO 4064)	L	mm	190	190	260	300	270
Overall length with coupling	L2	mm	288	288	378	438	-
Connection thread on meter (ISO 228/1)		Inch	G1B	G1B	G1¼B	G2B	G2½B
Connection thread of coupling (DIN 2999)		Inch	R¾	R¾	R1	R1½	R2
Height	H	mm	41	41	44	46	83
Height	H1	mm	79	79	86	104	206
Diameter	Ø B	mm	98	98	104	137	165
Weight without coupling		kg	1.8	1.8	2.8	5.4	12.4

* Version flange

PRESSURE LOSS GRAPH / TYPICAL ERROR GRAPH



Pressure loss graph



Typical error graph

CORONA 101/102 Meter for rising pipes 102

MULTI-JET METER | WET RUNNER

GENERAL

Meter for rising pipes 102		
Medium temperature range	°C	0 ... 30
Temperature safety	°C	0 ... 50
Ambient operating temperature	°C	0 ... 55
Ambient storage temperature	°C	0 ... 55
Nominal pressure	PN bar	16
Display range		0.05 l ... 999,999 m ³
Protection class		IP 68

TECHNICAL DATA

Nominal diameter	DN	mm	20	20	25	40
Permanent flow rate	Q ₃	m ³ /h	2.5	4	10	16
Nominal flow rate	Q _n	m ³ /h				
Overload flow rate	Q ₄	m ³ /h	3.125	5	12	20
Transitional flow rate	Q ₂	l/h	40	40	90	150
Minimum flow rate	Q ₁	l/h	25	25	40	80
Starting flow rate (MID)		l/h	4-6	4-6	6-8	20-25
Pressure loss at Q ₃		bar	0.6	0.6	0.6	0.6

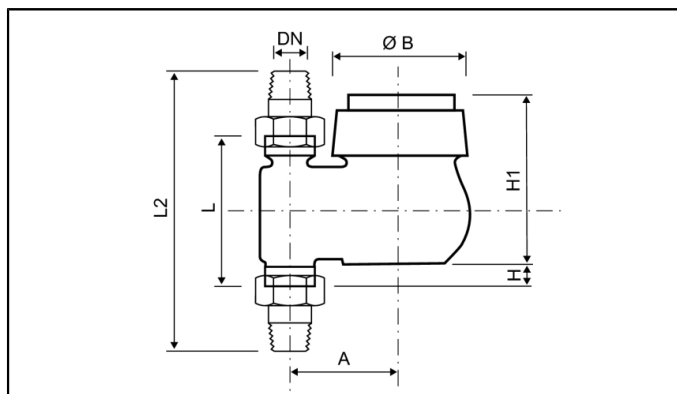
APPROVAL

Nominal diameter	DN	mm	20	20	25	40
Permanent flow rate	Q ₃	m ³ /h	2.5	4	10	16
Nominal flow rate	Q _n	m ³ /h				
MID			TH 8628	TH 8628	TH 8628	TH 8628
Dynamic range horizontal installation (Q ₃ /Q ₁)	R		80 / 100	40 / 80 / 160	80	80

CORONA 101/102 Meter for rising pipes 102

MULTI-JET METER | WET RUNNER

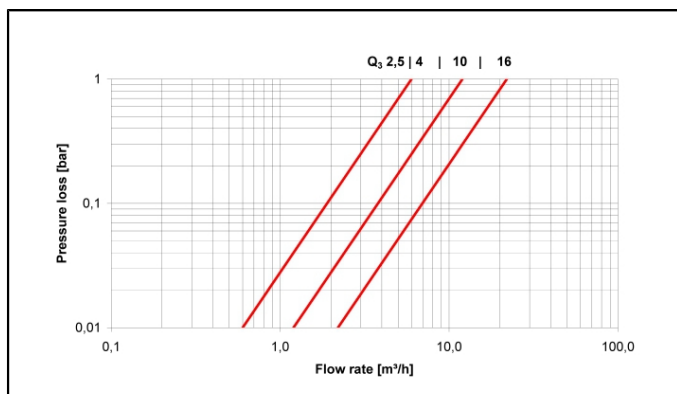
DIMENSIONS



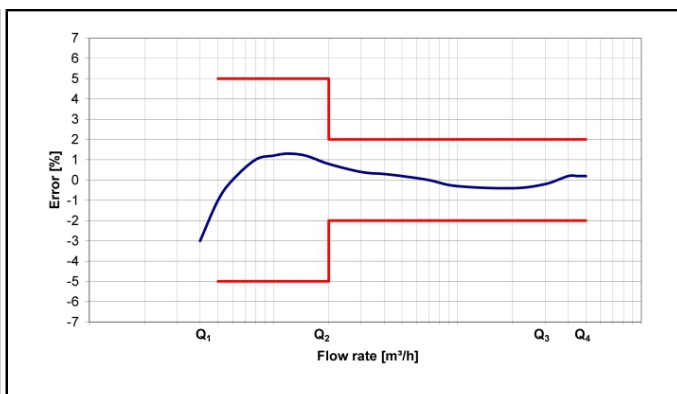
Nominal diameter	DN	mm	20	20	25	40
Permanent flow rate	Q ₃	m ³ /h	2.5	4	10	16
Nominal flow rate	Q _n	m ³ /h				
Overall length (DIN ISO 4064)	L	mm	105	105	150 (135)*	200 (150)*
Overall length with coupling	L2	mm	203	203	268 (253)	338 (288)
Connection thread on meter (ISO 228/1)		Inch	G1B	G1B	G1¼B	G2B
Connection thread of coupling (DIN 2999)		Inch	R¾	R¾	R1	R1½
Height	H	mm	18	18	31	21
Height	H1	mm	118	118	130	147
Diameter	Ø B	mm	98	98	101	136
Width	A	mm	82	82	95	120
Weight without coupling		kg	1.9	1.9	3.2	6.3

* Special overall length on request

PRESSURE LOSS GRAPH / TYPICAL ERROR GRAPH



Pressure loss graph



Typical error graph